

Is Machine Tool the Career for You?

Are you a high school student who...

Likes to create and build things with their hands?

Is interested in learning new technology?

Likes to analyze and solve problems?

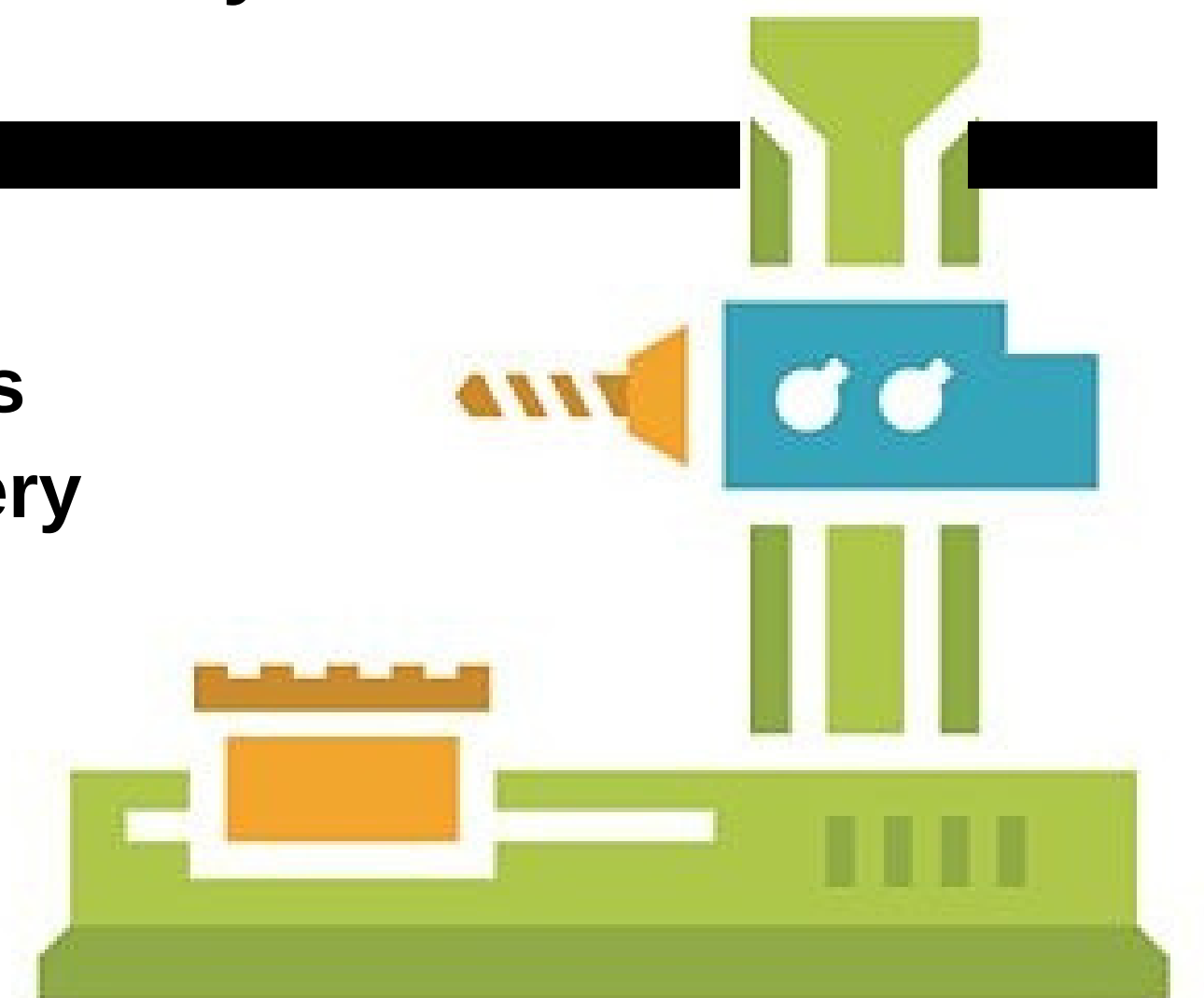


Then **Machine Tool Tech** might be the best career path for you!



WHAT IS A MACHINE TOOL TECH?

Machining is an exciting career field with almost limitless potential for growth. Machinists use a variety of machinery and tools to shape raw materials into a finished product. Everything from automotive parts to advanced robotics, medical implants to the space program rely on precision machinists.



THE WORK



In our area, people with machine tool tech training are working as machinists, CNC machine tool operators, and millwrights with local job opportunities available at:



SELMET, INC.



RAISING EXPECTATIONS. KEEPING THEM THERE.

THE PAY

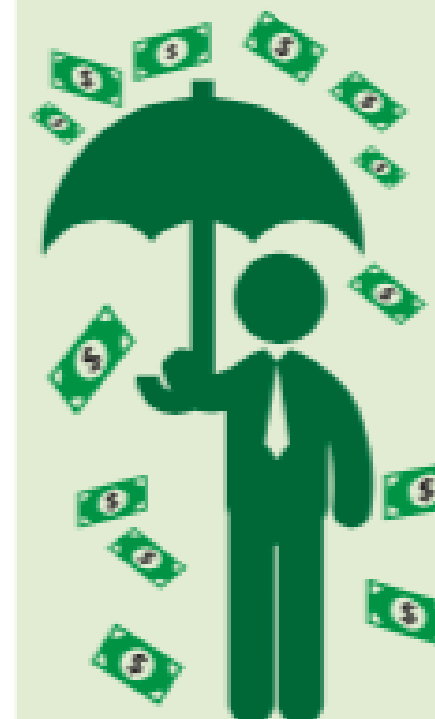


\$33,396/yr

AVERAGE ENTRY-LEVEL

\$22.75/hr

MEDIAN WAGE IN OUR AREA



\$81,593/yr

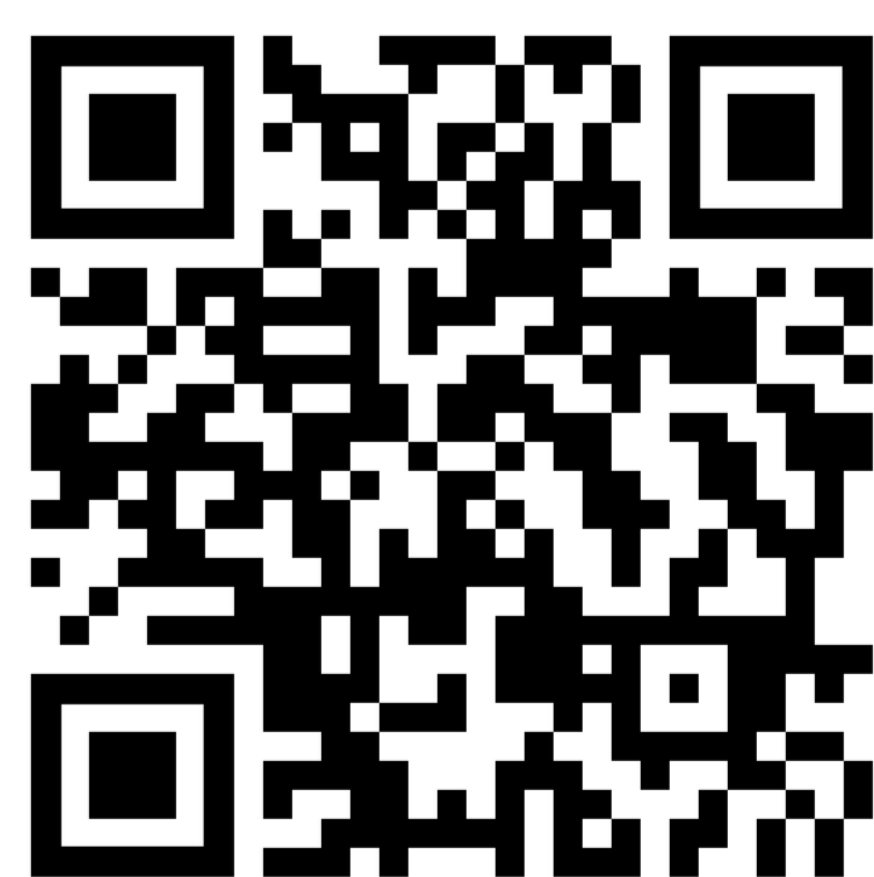
TOP 10% EARN AT LEAST THIS

THE EDUCATION

Machine Tool Technology
(Associate of Applied Science)



Machine Tool Technology
(One-year Certificate)



CNC Machinist Certificate
(Accelerated)



www.linnbenton.edu



Fast Lane to Success

www.pipelinetojobs.com



www.albanychamber.com



Fast Lane to Success

CAREERS WORTH PURSUING

LEARN MORE AT:
WWW.PIPELINETOJOBS.COM



Who is Pipeline?

Funded in large part by local businesses. Pipeline is made possible because of the combined forces of people who care:

ATI
Albany Chamber of Commerce
Entek
OFD Foods

Samaritan Health Services
Selmet
Viper Northwest

Community and Government Partners
City of Albany

Linn County

Sponsoring Education Partners
Central Linn School District
Corvallis School District
Greater Albany Public Schools
Lebanon Community School District

Linn-Benton Community College
Philomath School District
Scio School District
Sweet Home School District

Grant Partners
Ford Family Foundation

Mid-Valley STEM/CTE Hub

